



Rabbit anti PKC (pS345) Polyclonal Antibody

Alternative Name(s): Protein kinase C

Order Information

- **Description:** PKC (pS345)
- **Catalogue:** 500-9244
- **Lot:** See label
- **Size:** 100ug/200ul
- **Host:** Rabbit
- **Clone:** nan
- **Application:** IHC(P), WB
- **Reactivity:** Hu, Ms, Rt

ANTIGEN PREPARATION

A synthetic peptide corresponding to the epitope -EDR-S-KSAP- with a phosphorylated Ser 345 of human PKC.

BACKGROUND

Protein kinase C (PKC) is a family of serine- and threonine-specific protein kinases that can be activated by calcium and the second messenger diacylglycerol. PKC family members phosphorylate a wide variety of protein targets and are known to be involved in diverse cellular signaling pathways. With cytotoxic dose (100 uM) of anticancer drug, cisdiamminedichloroplatinum(II) (CDDP) incubation, the phosphorylation and translocation into nuclear of PKC in cancer cells including SKBR-3 which express different PKC isoforms was found. Overexpression of PKC was reported in several hemopoietic cell lines and tumors. PKC-epsilon was considered as a full oncogenic potential.

PURIFICATION

The Rabbit IgG is purified by site-modified Epitope Affinity Purification.

FORMULATION

This affinity purified antibody is supplied in sterile Tris-buffered saline (pH7.2) containing antibody stabilizer

SPECIFICITY

This antibody only recognizes PKC phosphorylated at Serine 345, but not the non-phosphorylated 345. It is human, rat and mouse reactive.

STORAGE

The antibodies are stable for 24 months from date of receipt when stored at -20oC to -70oC. The antibodies can be stored at 2oC-8oC for three month without detectable loss of activity. Avoid repeated freezing-thawing cycles.

APPLICATIONS/SUGGESTED WORKING DILUTIONS*

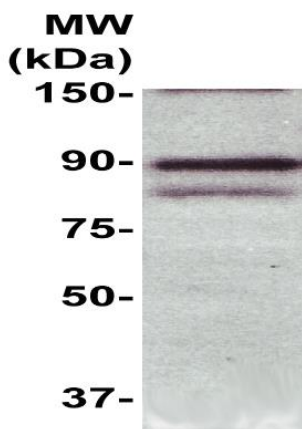
- Western Blot: 0.1-1 µg/ml
- ELISA: 0.01-0.1 µg/ml
- Immunoprecipitation: 2-5 µg/ml
- IHC: 2-10 µg/ml
- Flow cytometry: Not tested
- Molecular Weight: 90.0
- Positive Control: Kidney Tissue
- Cellular Location: Cell Membrane

*Optimal dilutions should be determined by researchers for the specific applications.

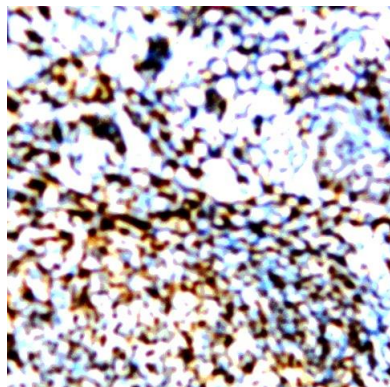
FOR RESEARCH USE ONLY.

AbboMax, Inc 2528 Qume Drive, Suite 8, San Jose, California 95131, USA
1 408-573-1898 (Tel). 1 408-573-1858 (Fax). www.abbomax.com info@abbomax.com

DATA ATTACHMENTS



Western Blot: The SKBR-3 cells was cultured with 100 uM CDDP for 3 hours, harvest, lysed and ran onto 7.5% SDS-PAGE, transferred onto NC membranes. Then followed by immunoblotting with the Rabbit anti Phospho-PKC(pS345) (Cat#500-9244) @ 1:500. An immunoreactive bands was observed around ~90 kDa.



Immunohistochemistry: Human lymph node (FFPE) stained with Rabbit anti-PKC(pS345) (Cat# 500-9244) at 1:200 for 10 min @ RT. Staining of formalin-fixed tissue requires boiling tissue sections in 10 mM Citrate Buffer, pH 6.0 for 10 min followed by cooling at RT for 20 min.

REFERENCES

FOR RESEARCH USE ONLY.

AbboMax, Inc 2528 Qume Drive, Suite 8, San Jose, California 95131, USA
1 408-573-1898 (Tel). 1 408-573-1858 (Fax). www.abbomax.com info@abbomax.com